

ART OF CARING YOUTH CHARITY GALA

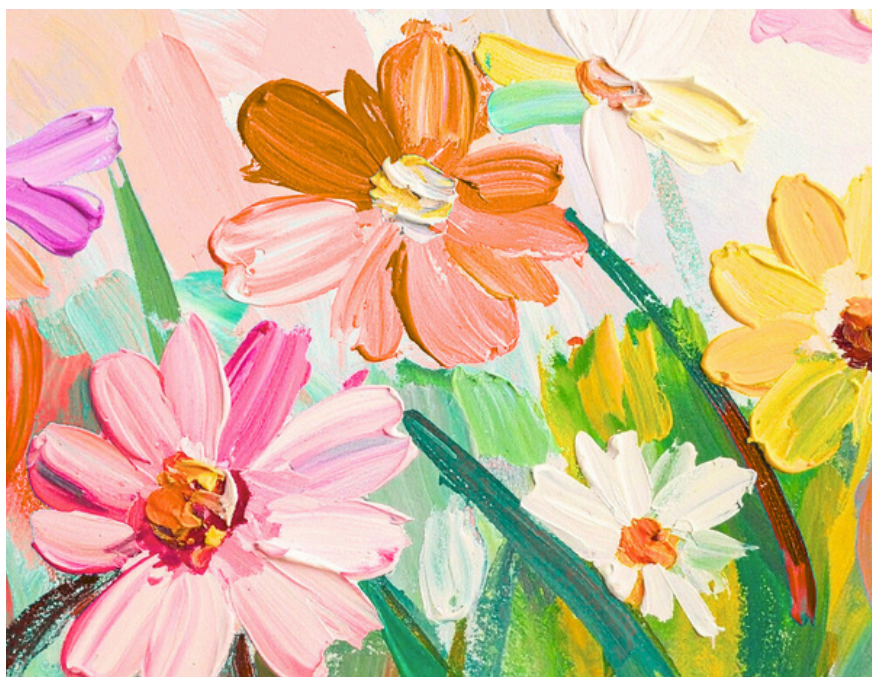
COMMUNITY & CORPORATE INVESTMENT GUIDE



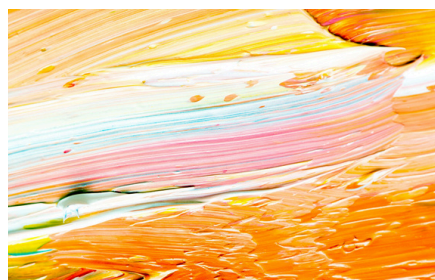
BRUCE GREY
CHILD & FAMILY SERVICES



Believe in communities of care by supporting our network of collaborative youth-driven agencies servicing local children and families. **Be the change** by investing in community and corporate sponsorship. Donate and join us at our semi-annual 'Art of Caring - Youth Charity Gala'. **See your community thrive** by enabling us to provide the resources and programs needed most. Become a partner or collaborator today!



WE ARE RESILIENT, STRONG, & CREATIVE



WE ARE CONNECTED



WE ARE COMMUNITIES OF CARE



WE ARE BIGGER TOGETHER

BECOME A SPONSOR

COMMUNITY & CORPORATE GIVING

Collectively, 'Bruce Grey Child & Family Services', 'Keystone Child, Youth & Family Services', and 'Big Brothers Big Sisters of Grey, Bruce and West Simcoe' support over eight thousand youth and families annually. From preventative community-based services, to crisis intervention and counselling, each respective agency plays a vital role in helping build resilient young people and thriving communities.

The 'Art of Caring' - Youth Charity Gala celebrates and supports this work with a formal night of community connection, featuring artwork from local youth and artisans, a shared meal, live auction, and livelier music. Invest in this unique Gala and take part in bringing our visions to life.

Bruce Grey Child and Family Services

Vision: Engaged and caring communities where children and youth thrive in strong families

Keystone Child, Youth & Family Services

Vision: Reaching out to provide responsive, compassionate services for children, youth, and families to build better and more hopeful futures

Big Brothers Big Sisters of Grey, Bruce and West Simcoe

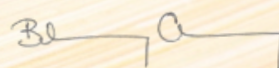
Vision: Communities where young people belong and are empowered to unlock their potential

Julie Lipsett

BGCFS, Executive Director



KCYFS, CEO & President



BBBSGBWS, Executive Director

PARTNERSHIP OPPORTUNITIES

LET'S BUILD SOMETHING MEANINGFUL – TOGETHER

At the 'Art of Caring' – Youth Charity Gala, we believe the most impactful partnerships are built through shared purpose and open conversation. Your support can take many forms – from financial contributions to in-kind donations or guest experiences. Let's co-create something that reflects your goals, your values, and positively impacts local children, youth and families.

MASTERPIECE \$20,000+

A partnership inspired by legendary works.

- Recognition in all agencies' media releases & event promotions
- Acknowledgement on all agencies' websites & social platforms
- Digital, televised, radio and print advertising
- Full-page program feature
- Custom guest activation (branded experience, etc)
- Ten (10) tickets to October 2026 Gala

GALLERY \$15,000+

A partnership that evokes a curated, refined experience.

- Recognition in all agencies' media releases & event promotions
- Acknowledgement on all agencies' websites & social platforms
- Digital, televised, radio and print advertising
- Half-page program feature
- Co-branded experience (e.g., photo booth, dessert station)
- Eight (8) tickets to October 2026 Gala

CANVAS \$10,000+

A foundational partnership; versatile and essential.

- Recognition in all agencies' media releases & event promotions
- Acknowledgement on all agencies' websites & social platforms
- Digital, televised, radio and print advertising
- Recognition in event program
- Branded item in guest gift bags
- Six (6) tickets to October 2026 Gala

SKETCH \$5,000+

A partnership vision that is full of potential.

- Recognition in all agencies' event promotions
- Acknowledgement on all agencies' websites & social platforms
- Digital and print advertising at event
- Four (4) tickets to October 2026 Gala

PALETTE \$2,500+

A partnership that brings everything together.

- Acknowledgement on all agencies' websites & social platforms
- Digital and print advertising at event
- Two (2) tickets to October 2026 Gala

Broaden Your Impact: Sponsor a Local Artist

By sponsoring a local artist, you help bring original artwork to our gala auction while directly investing in creative talent. Simply let us know how you'd like your contribution directed, and our team will handle the rest. Your organization will receive partnership recognition and be featured in the auction item description alongside the artwork you helped bring to life.

COLLABORATION OPPORTUNITIES

WHERE CREATIVITY MEETS COMMUNITY CARE

At the 'Art of Caring' – Youth Charity Gala, we celebrate the many ways our community comes together to lift up young people. By offering your expertise, services, or resources in-kind, you can help create an inspiring and memorable evening while showcasing your brand to an engaged audience.

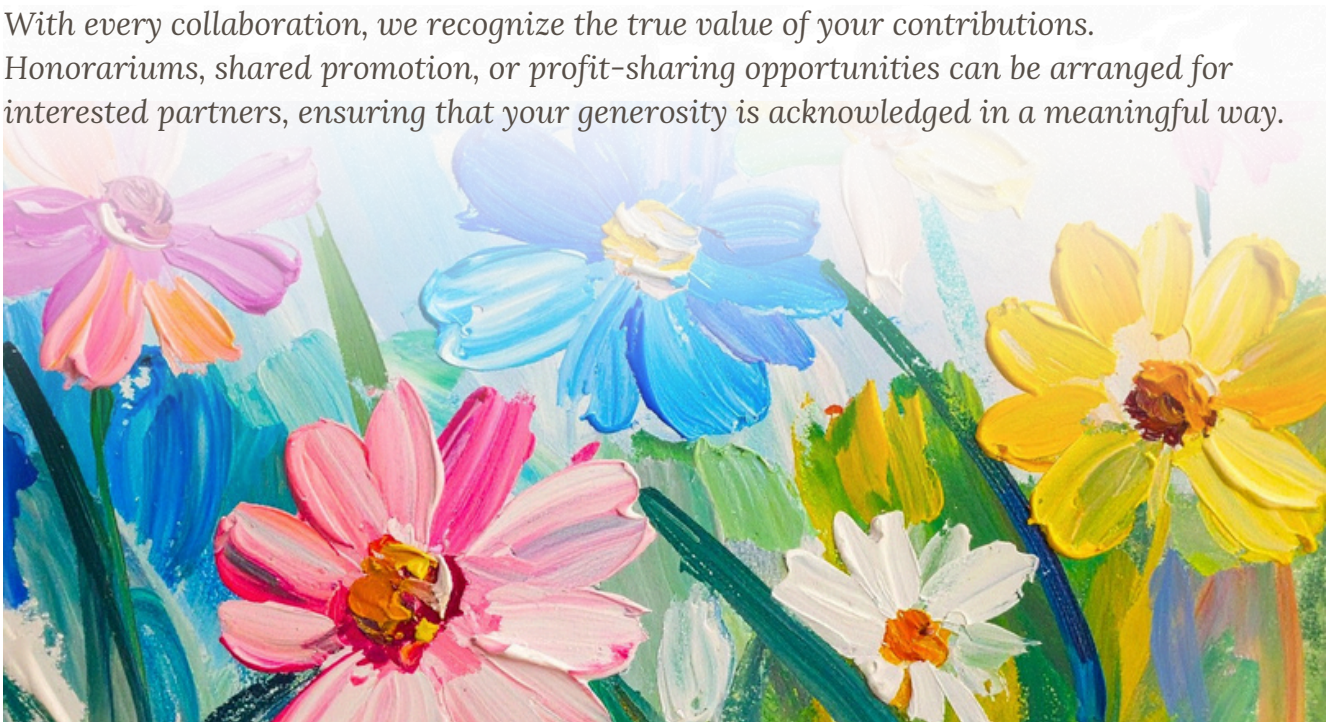
We welcome the opportunity to collaborate with businesses whose corporate social responsibility goals align with our mission—reach out to learn how your employees can get involved!

Ways to Contribute Include:

- **Donate Original Artwork** – Make a significant impact by donating original art pieces for auction
- **Offer Music, Dance, or Live Entertainment** – Celebrate the arts and showcase local talent throughout the evening
- **Underwrite a Custom Video** – Bring our stories to life with a professional video, premiered at the Gala and shared online
- **Interactive Guest Stations** – Host a collaborative art activity (e.g., community canvas, pottery demo, portrait sketches) that engages attendees directly
- **Donate In-Kind Services** – Printing, AV, décor, photography, or other professional services that enhance the evening
- **Host a Branded Guest Experience** – Delight attendees with a welcome cocktail, art station, or other engaging guest experience

With every collaboration, we recognize the true value of your contributions.

Honorariums, shared promotion, or profit-sharing opportunities can be arranged for interested partners, ensuring that your generosity is acknowledged in a meaningful way.



CONTACT INFORMATION

**Big Brothers Big Sisters of Grey, Bruce
and West Simcoe**

Beth Aubrey, Executive Director
ed.greybruce@bigbrothersbigsisters.ca

Bruce Grey Child and Family Services

Julie Lipsett, Executive Director
julie.lipsett@bgcfs.ca

Keystone Child, Youth & Family Services

David Willis, CEO & President
davidwillis@keystonebrucegrey.com



ART OF CARING
YOUTH CHARITY GALA